

Alcidae Series



**Explosion proof Torch Light
Group II Zone I Ex ib II C T4 Gb**

★ **LED Explosion Proof Torch Light**

Features and benefits

1. Made of top famous LED source Cree/OSRAM ,high efficacy, long lifespan , maintenance free.
2. High-strength aluminum alloy enclosure is smoothly sculpted for a comfortable and secure grip , extreme resistance to abrasion and corrosion, IP68.
3. High quality tempered glass with excellent light transmittance.
4. Designed with advanced optical principle , making visual distance up to 200m.
5. Three stages click-type switch: high output , working output , and flashing light.
6. Constant current ensures brightness stability
7. Lithium batteries : large power capacity , long lifespan.

Application:

1. Petroleum Industry, Petrochemical Industry, Metallurgical Industry, Power Generation Industry, Power Transmission Industry, Railway Industry, Public Security and Fire Fighting, etc.
2. Petroleum and petrochemical, aircraft, military, outdoors, indoors, portable emergency kits.
3. Group II Zone I.



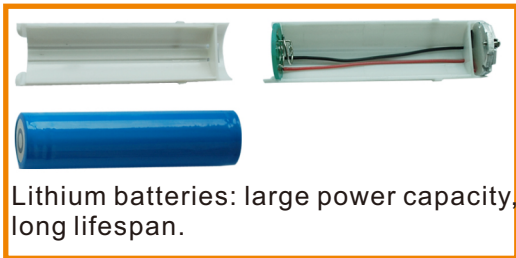
Executive standard

1. IEC 60079-0-2007 Explosive atmospheres - Part 0: Equipment - General requirements
2. EN 60079-11-2007 Explosive atmospheres - Part 11: Equipment protection by intrinsic safety "i"
3. IEC 60598-1:2008 Luminaires - Part 1: General requirements and tests
4. IEC60529:2001 Degrees of protection provided by enclosures(IP Code)

★ CHARACTERISTIC DETAILS



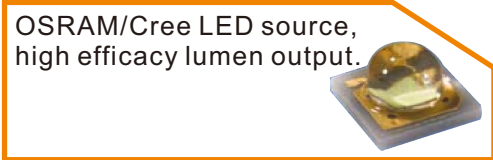
Three stages Click-type switch : high output, working output, and flashing light.



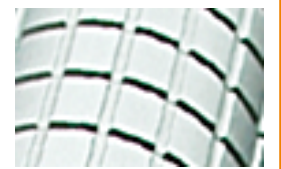
Lithium batteries: large power capacity, long lifespan.



Designed with advanced Optical Principles, making visual distance up to 200m.



OSRAM/Cree LED source, high efficacy lumen output.



High-strength aluminum alloy housing is smoothly sculpted for a comfortable and secure grip, extreme resistance to abrasion and corrosion, IP68.

★ PERFORMANCE PARAMETER



Electrical Parameter

Product type	Rated input voltage(V)	Rated battery capacity(Ah)	Battery working time(h)		Battery charging time(h)	Battery lifespan	Flashing frequency(Hz)
			High output	work light			
KACF80	3.7	2.2	≥9	≥18	6	300(cycles)	5
KACF180	3.7	2.2	≥9	≥18	6	300(cycles)	5

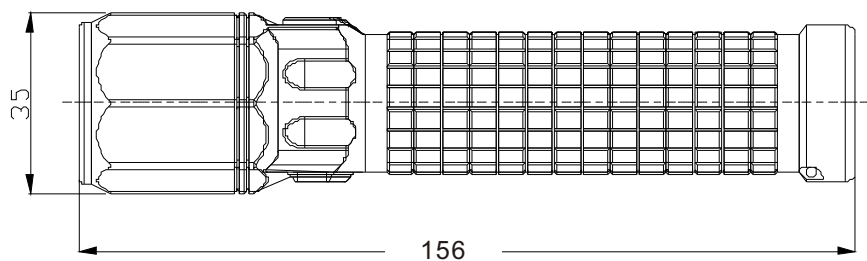
Photometric Parameter

Product type	P/N	Color temp.	CCT(K)	CRI	Luminous flux(lm)	Spotlight beam angle (°)	Floodlight beam angle (°)
KACF80	KACF80GWM-*-E	Warm white	2800~3300	82	129	10	80
	KACF80GNH-*-E	Natural white	4700~5400	70	157		
	KACF80GCH-*-E	Cool white	5400~6400	70	157		
KACF180	KACF180GWM-*-E	Warm white	2800~3300	82	129	10	180
	KACF180GNH-*-E	Natural white	4700~5400	70	157		
	KACF180GCH-*-E	Cool white	5400~6400	70	157		



Other Parameter

Product type	Size(mm)	Weight(Kg)	Ambient temp. (°C)	code	Temp.classification	Insulation	Color
KACF80	φ35*156	0.19	-20-+55	IP 68	T4	I	gray
KACF180	φ35*156	0.19	-20-+55	IP 68	T4	I	silver

Size(unit:mm)



ACCESSORIES

NO.	Name	Picture	Weight(Kg)	QTY
1	Car charger		0.12	1
2	Charger		0.06	1

⚠ Caution

1. To avoid the risk of fire, explosion, or electric shock, this product should be installed, inspected, and maintained by a qualified electrician only, in accordance with all applicable electrical codes.
2. To avoid electric shock:
Be certain electrical power is OFF before and during installation and maintenance.
3. To avoid explosion:
 - 1) Make sure the supply voltage is the same as the luminaire voltage.
 - 2) Do not install where the marked operating temperatures exceed the ignition temperature of the hazardous atmosphere.
 - 3) Do not operate in ambient temperatures above those indicated on the luminaire nameplate.
 - 4) All gasket seals must be clean.
 - 5) Before opening, electrical power to the luminaire must be turned off. Keep tightly closed when in operation.

Package Check

1. Check the carton and all the components according to the packing list.
2. Make sure the product is in good conditions.

Transportation

Please keep this product from heavy mechanical shock, exposure to strong sunshine, throwing, rolling and stress during transport.

Storage:

Kept in dry, clean and well-ventilated, non-corrosive medium warehouse, the ambient temperature should be -40°C to 55°C

After-sales service

Installation and maintenance must be according to the instruction.
If customer can not deal with it by themselves, please contact with sales department.

Contact

SHENZHEN KHJ SEMICONDUCTOR LIGHTING CO., LTD.

Address: 4-5 Floor, Building 7, HuangBeiLingJingXuan Industrial park, No.2 Dong Huan Rd, Yousong, Longhua new District, Shenzhen China.

Tel: +86-755-33953361
E-mail: khjledsales@khj.cn

Fax: +86-755-28030133
Web: www.khjled.com