

CNG line
CNG HD
Electric



CERTIFICATION: CE UNI EN ISO 9001:2015





Technical data

Type of gas	Natural gas - methane
Intake pressure	Max 200 mbar
Nominal pressure	250 bar
Filling pressure	200 bar or 250 bar
Max working pressure	200 bar or 250 bar
Permissible ambient temperature range	-10° C ÷ +40° C
Permissible altitude	0 ÷ 1.500 m SLM
Max permissible tilt	15°
Design	Silenced
Operating voltage, standard	400 V; 50 Hz
Other operating voltage	230 V, 50 Hz / 230 V, 60 Hz / 400 V, 60 Hz
Oil	Synthetic Coltri Oil ST 755
Oil change interval	Every year / 1.000 h
Frame	Steel 1,5 mm thickness - colour RAL 7035 - RAL 7016 Powder coating painting - scratch proof
Noise	LpA 66 dB

Compressor

	CNG HD 330 ET	CNG HD 400 ET	CNG HD 550 ET
Charging rate	330 l/min	400 l/min	550 l/min
Purification System	Hyperfilter		
Cooling air flow, min.	3000 m ³ /h		
Weight <small>Standard model. Weight and dimensions may vary depending on accessories.</small>	451 kg 994 lb	455 kg 1003 lb	463 kg 1020 lb
Dimensions (W x D x H)	79 x 130 x 155 cm - 31 x 54 x 61 in		

Engine

	CNG HD 330 ET	CNG HD 400 ET	CNG HD 550 ET
Type	Three-phase el.		
Power	9 kW – 12 Hp	11 kW – 15 Hp	15 kW – 20 Hp
Operating voltage/frequency <small>Different voltage / frequency available on request.</small>	400/690 V, 50 Hz		
Rated current		13,2 A	
Speed (RPM)	1.050	1.250	1.420
Protection class	IP55 (TEFC)		

Dimensioni

Width 79 cm (31")
 Depth 130 cm (54")
 Height 155 cm (61")

Dry weight

CNG HD 330 ET
 451 kg (994 lb)
CNG HD 400 ET
 455 kg (1003 lb)
CNG HD 550 ET
 463 kg (1020 lb)



Machine parts

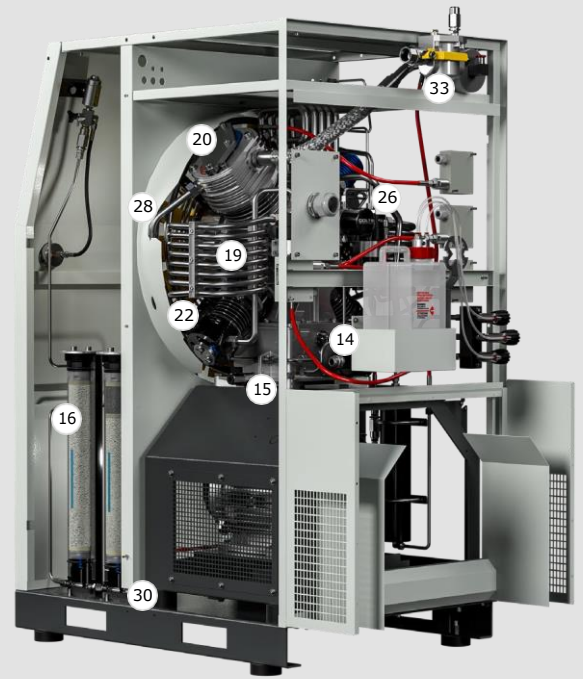
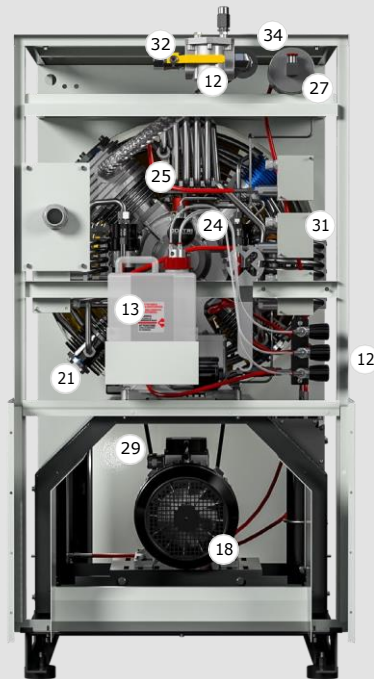
①	Frame	⑬	
②	Control pannel	⑭	
③	Selector switch ON/OFF	⑮	
④	ON pushbutton	⑯	
⑤	Stop pushbutton	⑰	
⑥	Emergency pushbutton	⑱	
⑦	Hour counter	⑲	
⑧	Thermostat	⑳	
⑨	Gases pressure gauge	㉑	
⑩	Oil pressure gauge	㉒	
⑪	High pressure gas outlet connection	㉓	
⑫	Condensate discharge valve	㉔	
			Condensate collection can
			Oil level
			Oil discharge valves
			Molecular sieve
			gases filter
			ATEX motor
			Compressor
			Gas suction filter
			1 st stage gas recovery
			2 nd stage
			3 rd stage
			4 th stage
			Monobloc

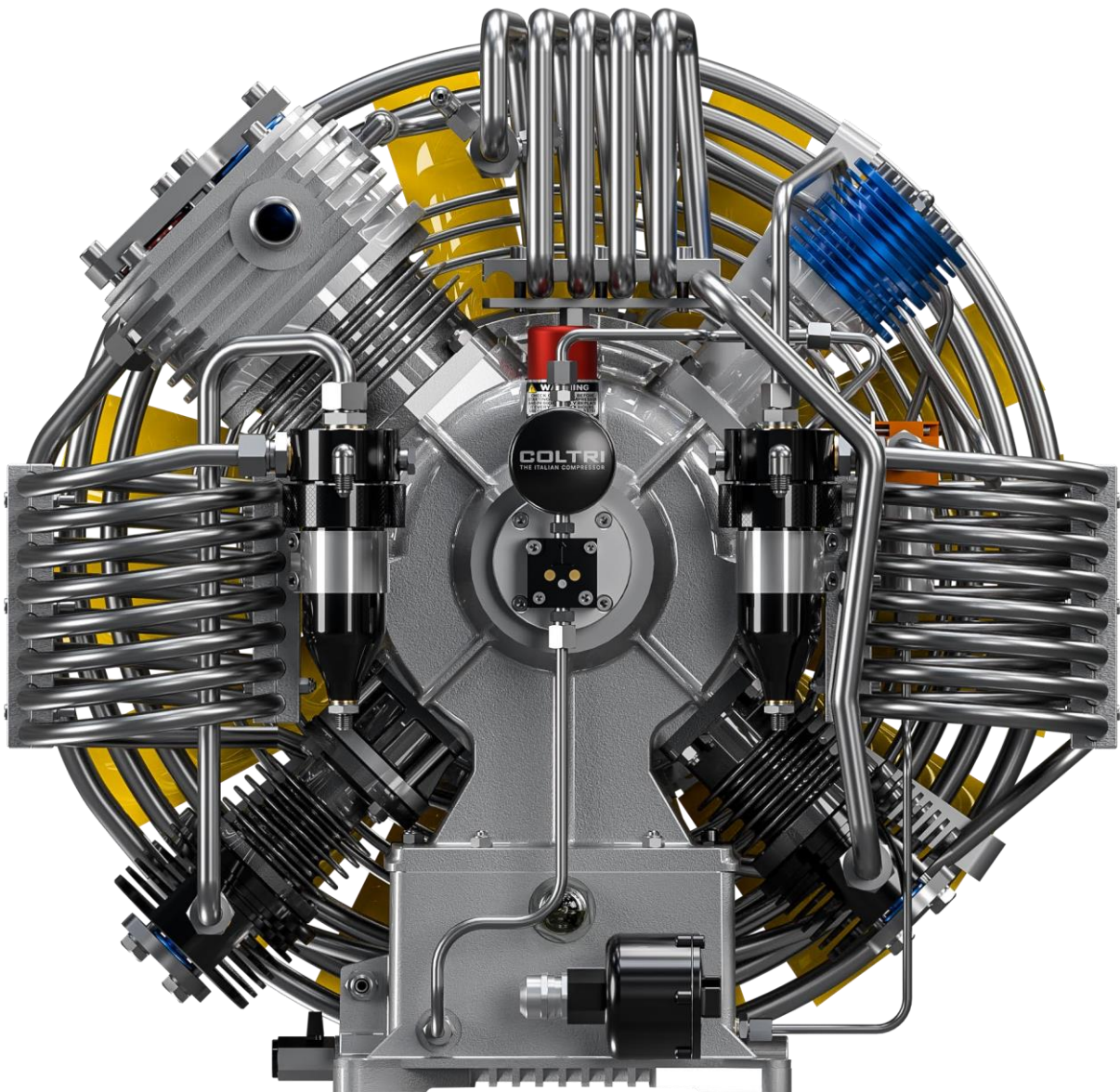
Oil
filler
plug
Oil
filter
Safety
valves

Antistati
c
cooling
fan
Antista
tic belt
Anti-

25
26
27
28 vibration device
29 Pressure switches
30 Gas aspiration connector
31 Manifold safety valves
32 Fireplace exhaust gas
33
34

4





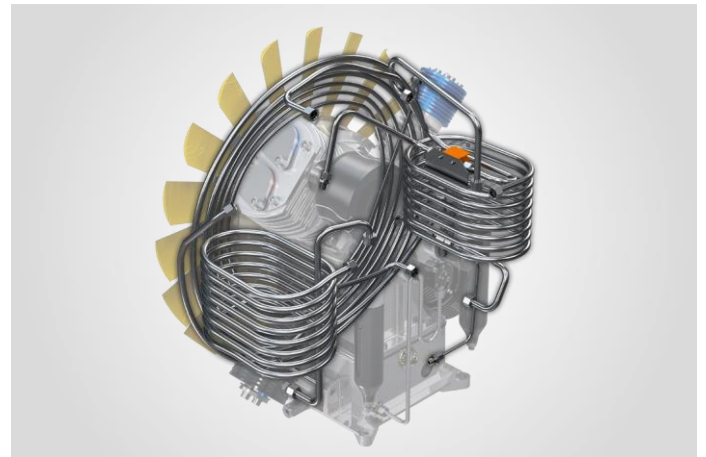
1.
Forced lubrication
with low pressure
gear pump



2. Inlet filter



3. Pipes, fittings and nuts in stainless steel AISI 316

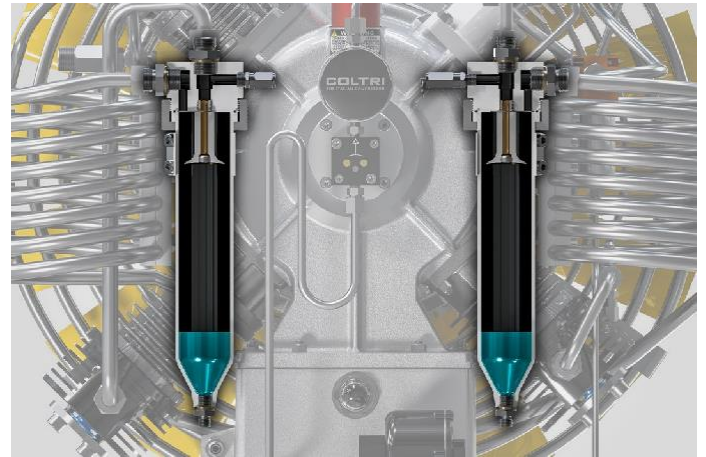


4. Synthetic oil with special formulation for CNG compressor

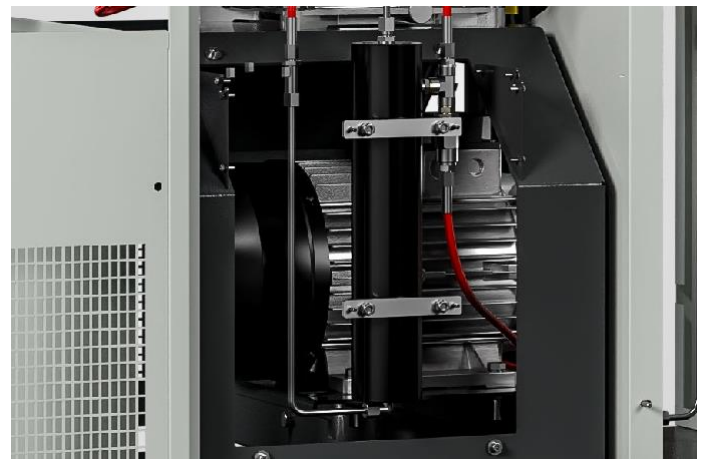


Discover more on Coltri Oil ST 755

5. Intermediate condensate separator after the second stage



6. High pressure final condensate separators double effect



7. Pressure switches valves after each stage of compression



8.
Special cast iron cylinders
with low roughness
lapping



9.
Forged aluminum
connecting rods



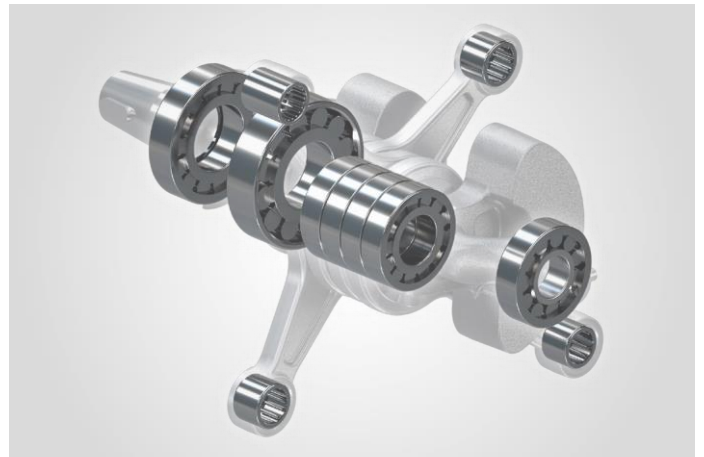
10.
Crankshaft
forged steel



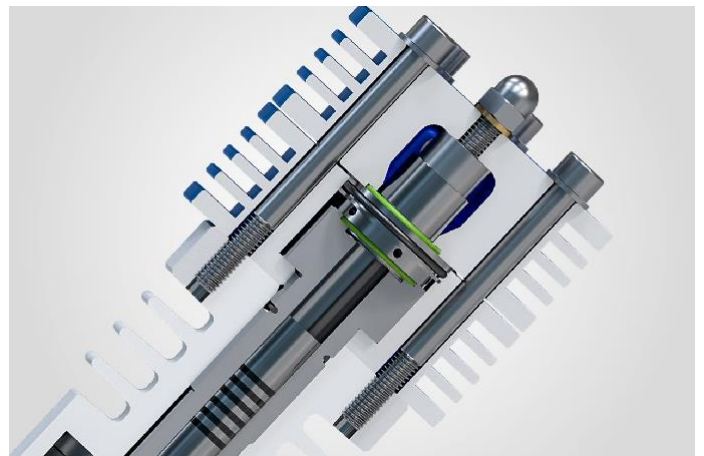
11.
High-flow first, second
and third stage valves



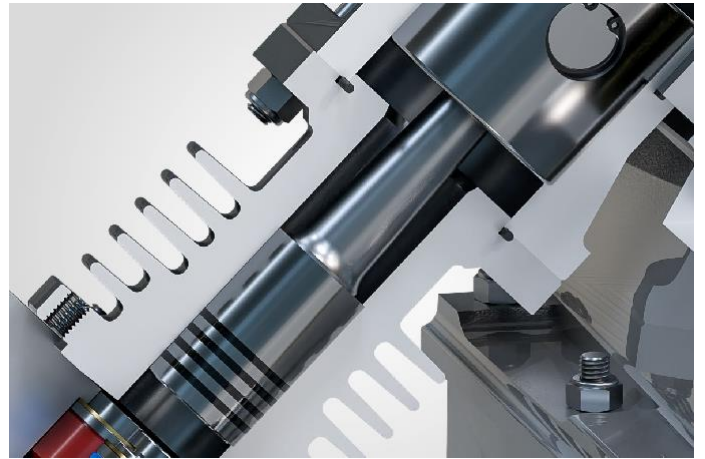
12.
Roller Bearings
for intensive work



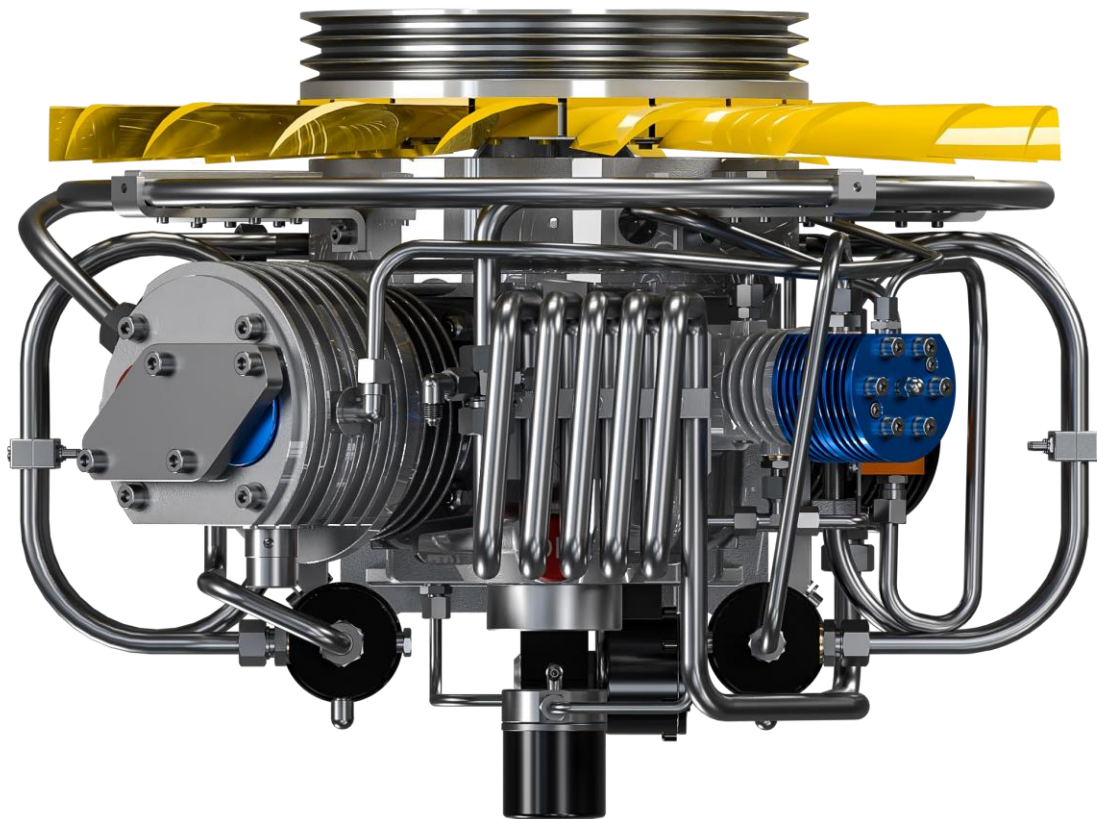
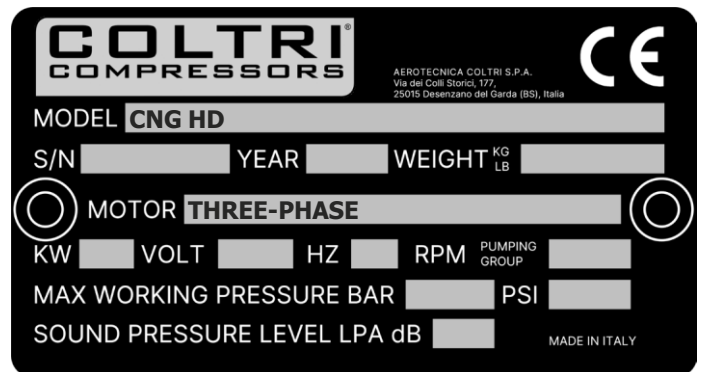
13.
Fourth stage in tempered
steel with 6 segments in
special cast iron



14.
 Second and third stage
 with pushing pistons
 to eliminate lateral forces
 on the pistons

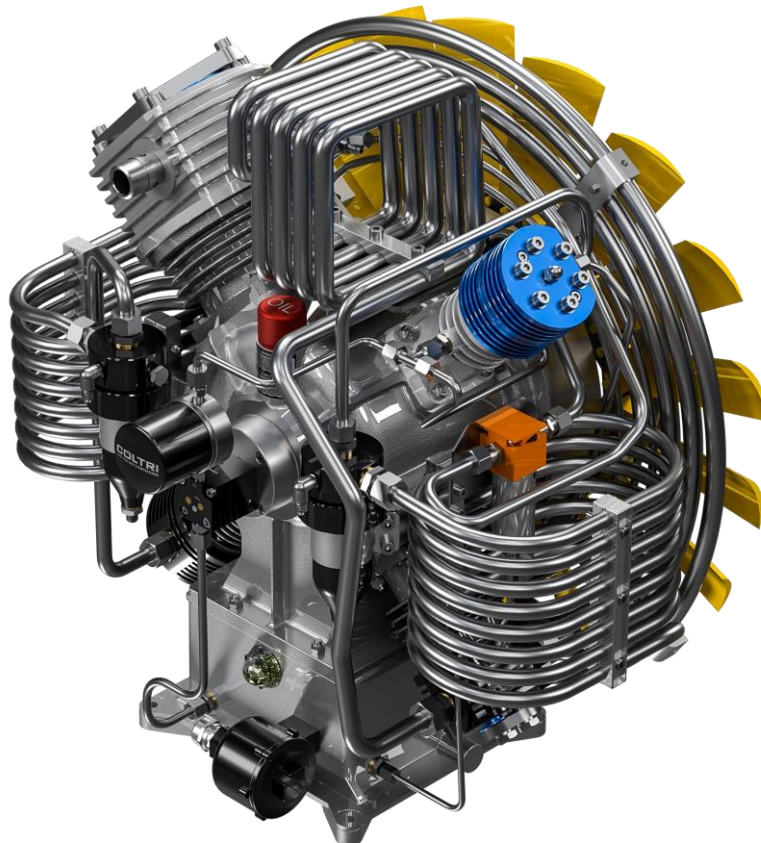


15.
 Label
 CE certification



Compressor block

	MCH 20 ET	MCH 24 ET	MCH 34 ET
	CNG HD 330 ET	CNG HD 400 ET	CNG HD RC 550 ET
Charging rate	330 l/min	400 l/min	550 l/min
Measured during 10 liters cylinder filling from 0-200 bar tolerance +/- 5% at + 20 ° C ambient temperature.			
Speed RPM	1.050	1.250	1.420
Intake pressure	From 17 to 200 mbar		
Number of stages	4		
Number of cylinder	4		
Cylinder bore 1st stage	130 mm		
Cylinder bore 2nd stage	60 mm		
Cylinder bore 3rd stage	32 mm		
Cylinder bore 4th stage	15 mm		
Stroke	50 mm		
Direction of rotation (from flywheel side)	Left - counter clockwise		
Drive type	V-belt A type		
Intermediate pressure 1st stage	~ 3,2 bar		
Intermediate pressure 2nd stage	~ 16 bar		
Amount of oil	4 litri		



Standard equipment

Inlet filter



Natural gas refueling gun with direct action NGV1



4.5 m filling hose



Low pressure switch at the gas inlet



Purification system HYPERFILTER

DOUBLE HYPERFILTER regenerable or disposable cartridge


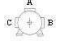



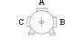
COD. 36-07-034/PP/CNG/1

Purification system	Hyperfilter x 2
Operating pressure (Standard)	200 bar / 250 bar
Operating pressure max. (PS)	420 bar
Processable air capacity (air inlet temperature in the filter 20° C at 300 bar)	3.050 m ³


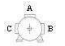
Data sheet three-phase electric motor 9 kW

Data sheet three-phase electric motor 11 kW

		SPECIFICA TECNICA MOTORE EL. <i>Electric motor technical data sheet</i>		Potenza/ Power (kW)	Poli/ Poles
				9	2
		Data 25/06/2015		Rev. 0	
No	Descrizione/Description	Dat/Data			U.d.m.
1	Codice Soga / ref.code	150779			
2	Modello / Motor type	MT1 132 MB/2			
3	Descrizione / Description	Three-phase asynchronous motor 9kW 2 Poles 400/690V 50Hz			
4	Carcassa motore / Framesize	132 M			
5	Poli / Poles	2			
6	Forma di costruzione / Mounting type	IM B3			
7	Potenza nominale / Rated output	9	9	10,5	[kW]
8	Fattore di servizio / Service factor	1.0			
9	Tipo di servizio / Duty type	S3-75%			
10	Tensione / Rated voltage	400/690	400/690	Δ440-480	[V]
11	Frequenza / Rated frequency	50	60	60	[Hz]
12	Corrente nominale / Rated current	18,8/11	18,8/11	18,8	[A]
13	Velocità nominale / Rated speed	2880	3450	3450	[min ⁻¹]
14	Fattore di potenza / Power factor	0,87	0,87	0,87	
15	Coppia nominale motore / Rated motor torque	29,8	24,9	29,1	[Nm]
17	Corrente avviamento / Corrente nominale Starting current / Rated current	6,3			Isp/In
18	Coppia avviamento / Coppia nominale Starting torque/Rated torque	2,8			Msp/ Mn
19	Classe d'isolamento / Insulation class	F			
20	Grado di protezione / Enclosure	IP55			
21	Posizione scatola morsetteria (motore con piedini) Terminal box position (motor with feet)	A			
22	Terminali potenza / Power leads terminal	M6			
23	Peso / Weight	47			[kg]
24	Cuscinetti /bearings	Drive end	6308		
		Non drive end	6308		
Note/remarks: Targa con logo Coltri Compressors.					

		SPECIFICA TECNICA MOTORE EL. <i>Electric motor technical data sheet</i>		Potenza/ Power (kW)	Poli/ Poles
				11	2
		Data 24/06/2015		Rev. 0	
No	Descrizione/Description	Dat/Data			U.d.m.
1	Codice Soga / ref.code	124545			
2	Modello / Motor type	MT1 132 MC/2			
3	Descrizione / Description	Three-phase asynchronous motor 11kW 2 Poles 400/690V 50Hz			
4	Carcassa motore / Framesize	132 M			
5	Poli / Poles	2			
6	Forma di costruzione / Mounting type	IM B3			
7	Potenza nominale / Rated output	11	11	13	[kW]
8	Fattore di servizio / Service factor	1.0			
9	Tipo di servizio / Duty type	S3-75%			
10	Tensione / Rated voltage	400/690	400/690	Δ 440-480	[V]
11	Frequenza / Rated frequency	50	60	60	[Hz]
12	Corrente nominale / Rated current	23/13,3	23/13,3	23	[A]
13	Velocità nominale / Rated speed	2910	3500	3500	[min ⁻¹]
14	Fattore di potenza / Power factor	0,87	0,91	0,87	
15	Coppia nominale motore / Rated motor torque	36	30	35,5	[Nm]
17	Corrente avviamento / Corrente nominale Starting current / Rated current	6,8			Isp/In
18	Coppia avviamento / Coppia nominale Starting torque/Rated torque	2,7			Msp/ Mn
19	Classe d'isolamento / Insulation class	F			
20	Grado di protezione / Enclosure	IP55			
21	Posizione scatola morsetteria (motore con piedini) Terminal box position (motor with feet)	A			
22	Terminali potenza / Power leads terminal	M6			
23	Peso / Weight	52			[kg]
24	Cuscinetti /bearings	Drive end	6308		
		Non drive end	6308		
Note/remarks: Targa con logo Coltri Compressors.					

Data sheet three-phase electric motor 15 kW

		SPECIFICA TECNICA MOTORE EL. <i>Electric motor technical data sheet</i>		Potenza/ Power (kW)	Poli/ Poles
				15	2
		Data 25/06/2015		Rev. 0	
No	Descrizione/Description	Dat/Data			U.d.m.
1	Codice Soga / ref.code	150791			
2	Modello / Motor type	MT1 132 MD/2			
3	Descrizione / Description	Three-phase asynchronous motor 15kW 2 Poles 400/690V 50Hz			
4	Carcassa motore / Framesize	132 M			
5	Poli / Poles	2			
6	Forma di costruzione / Mounting type	IM B3			
7	Potenza nominale / Rated output	15	15	18	[kW]
8	Fattore di servizio / Service factor	1.0			
9	Tipo di servizio / Duty type	S3-75%			
10	Tensione / Rated voltage	400/690	400/690	440-480 Y	[V]
11	Frequenza / Rated frequency	50	60	60	[Hz]
12	Corrente nominale / Rated current	31/17,9	31/17,9	31	[A]
13	Velocità nominale / Rated speed	2920	3500	3500	[min ⁻¹]
14	Fattore di potenza / Power factor	0,86	0,91	0,86	
15	Coppia nominale motore / Rated motor torque	49	41	49,1	[Nm]
17	Corrente avviamento / Corrente nominale Starting current / Rated current	7,2			Isp/In
18	Coppia avviamento / Coppia nominale Starting torque/Rated torque	2,5			Msp/ Mn
19	Classe d'isolamento / Insulation class	F			
20	Grado di protezione / Enclosure	IP55			
21	Posizione scatola morsetteria (motore con piedini) Terminal box position (motor with feet)	A			
22	Terminali potenza / Power leads terminal	M6			
23	Peso / Weight	59			[kg]
24	Cuscinetti /bearings	Drive end	6308		
		Non drive end	6308		
Note/remarks: Targa con logo Coltri Compressors.					

coltri.com



COLTRI
THE ITALIAN COMPRESSOR