



Breakaway Coupling TSA^γ WEH

In the event of accidental deployment, e.g. driving a vehicle from the dispenser with the nozzle remaining in the vehicle fuel port, the coupling will separate the connections between dispenser and hoses sealing both ends. This protects largely the receptacle, the fueling nozzle and the dispenser against damage. The detached coupling can be easily reattached and placed back in service after having been function tested.

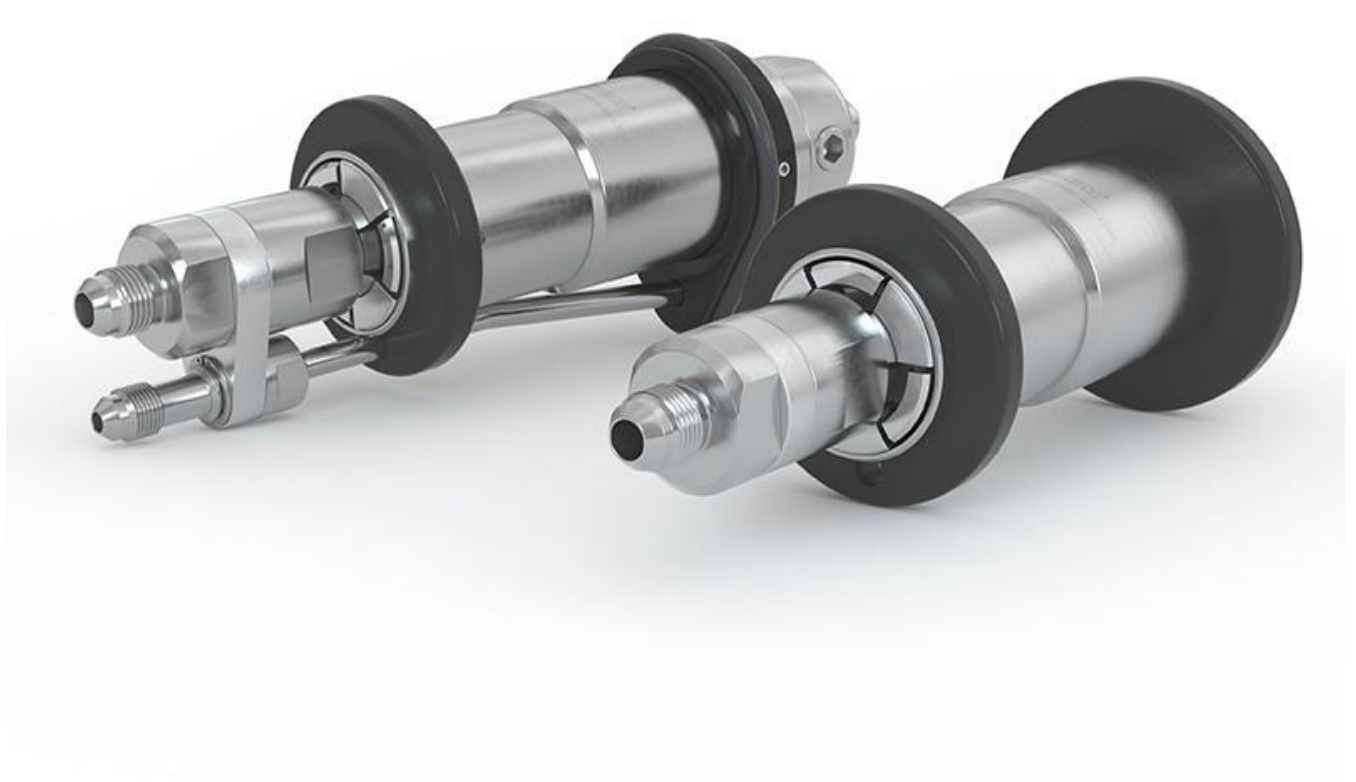
The breakaway device consists of a coupling body, a receptacle insert and an optional gas recirculation.

We recommend the installation of a TSF^ρ CNG filter when using the TSA^γ CNG inline breakaway coupling. The filter protects your system from dirt ingress.

We also offer complete hose assemblies consisting of a fueling nozzle, a hose set and a breakaway coupling (for complete hose assemblies see respective fueling nozzle).

Features

- **Re-usable without factory reservicing**
- **Installation inbetween the filling and venting hoses**
- **Small compact design**
- **Version with or without gas recirculation**
- **Rubber protection**
- **Eccentric actuation via an allen wrench**



Technical Data:

Nominal bore (DN)	Acc. to design
Pressure range	PN = 200 bar (2,900 psi) PS = 200 bar PN = 250 bar (3,600 psi) PS = 250 bar
Temperature range	-40 °C up to +150 °C
Breakaway force	222 - 660 N
Material	Corrosion resistant stainless steel, aluminium
Sealing material	Natural gas compatible
Design	With gas recirculation

