

## BHD51 防爆接线盒

BHD51 Explosion-proof Terminal Box



### 应用场所 Application

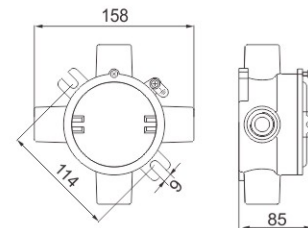
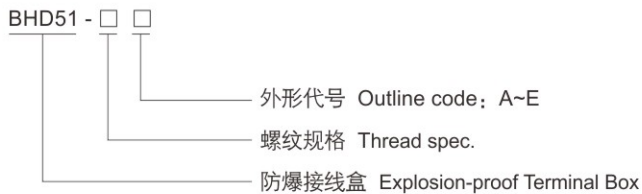
- ◆ 广泛应用于海洋工程各类作业平台、各类化学品、天然气运输船、危险品码头等危险区域作照明、电力及控制线路的连接；
- ◆ 可在潮湿、振动、腐蚀等恶劣环境中可靠使用；
- ◆ 适用于爆炸性危险环境1区、2区、21区、22区等场所。
- ◆ Widely used for connection of lighting, power or control circuit on various marine platforms, chemical tankers, LNG ships and dangerous cargo wharfs etc.;
- ◆ Can reliably work in severe environment where is easily affected by moisture, vibration, or corrosion;
- ◆ Explosive hazardous atmosphere Zone 1, Zone 2, Zone 21, Zone 22.



黄铜 Brass

不锈钢 Stainless steel

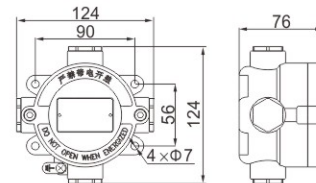
### 型号含义 Catalogue Number Logic



不锈钢  
Stainless steel

### 技术参数 Technical parameters

执行标准 Compliance	IEC60079, EN60079, GB3836, GB12476, CCS入级规范 (CCS standard)
防爆标志 Ex-Mark	Ex d IIC T6 Gb / Ex tD A21 IP66 T80°C
额定电压 Rated voltage	380V
额定电流 Rated current	20A
防护等级 Degree of protection	IP66
防腐等级 Corrosion-proof	WF2
端子数量 Number of terminals	4节端子 4 terminals
温度范围 Temperature	-60°C~+55°C



黄铜  
Brass

电缆外径(Φ,mm) Cable outer diameter	螺纹 Thread
6.5~10	M20×1.5
10~14	M25×1.5
12~17	M32×1.5

### 外形代号 Outline code

BHD51 系列防爆接线盒代号, 外形及名称一览表  
Code, outline and description of BHD51 series explosion-proof terminal boxes

代号 Code	外形 Outline	名称 Description	代号 Code	外形 Outline	名称 Description
A		一通平 One entry in horizon	D		四通平 Four entries in horizon
B		直二通平 Two direct entries in horizon	E		直角二通平 Two perpendicular entries in horizon
C		三通平 Three entries in horizon			